

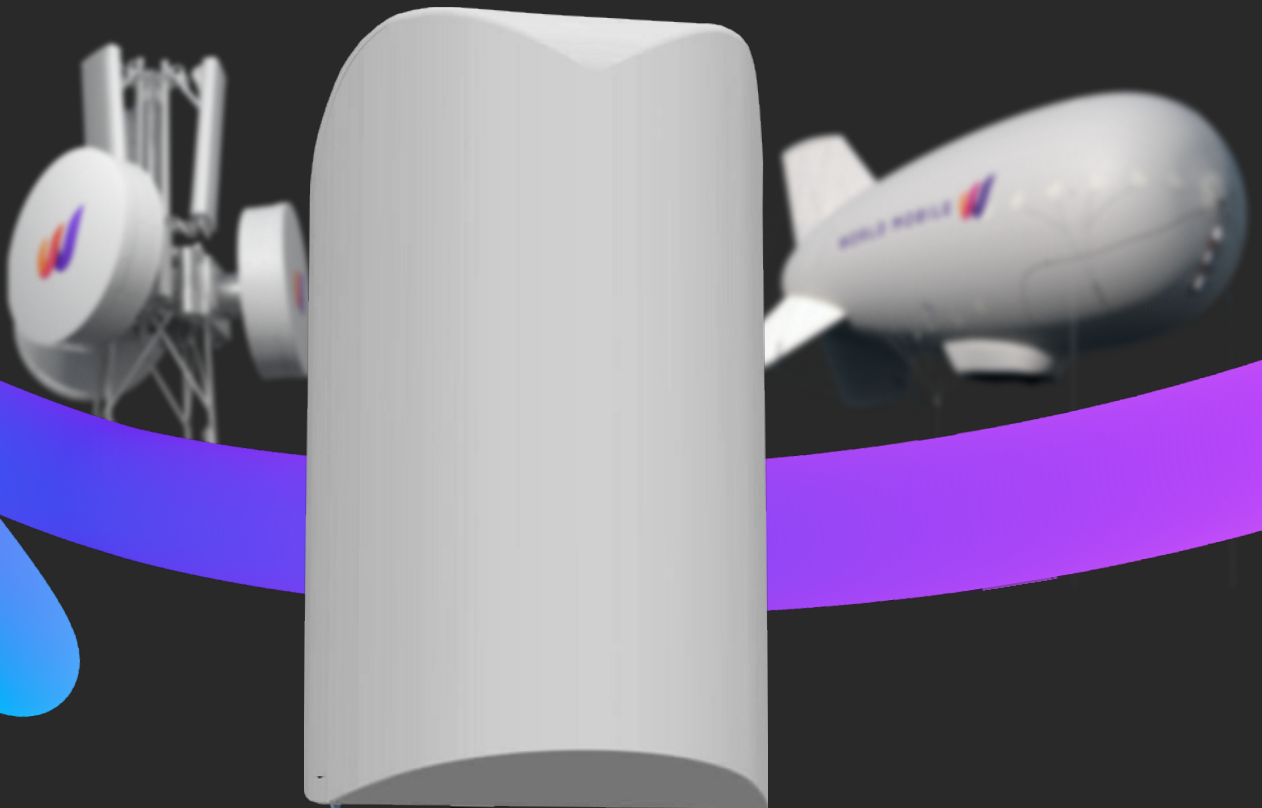


WORLD MOBILE

Datasheet

# AirNode FW-300i

Power the World Mobile Network,  
connect your community and earn rewards.





**All-In-One Solution**



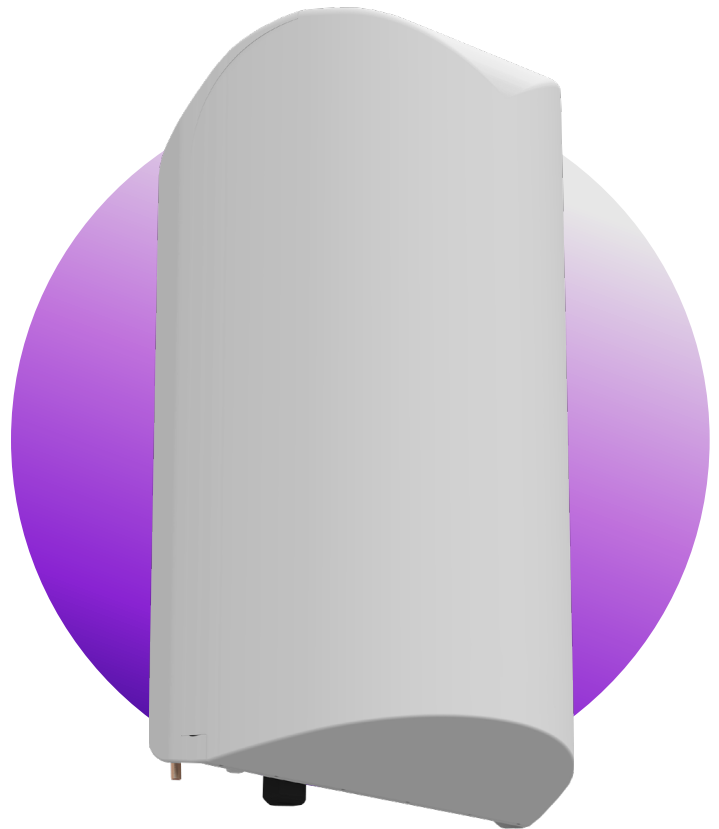
**Ease of Deployment**



**CBRS Category B  
Certified**



**Supports Carrier  
Aggregation**



## **3x Coverage & Capacity at 1/3 the cost**

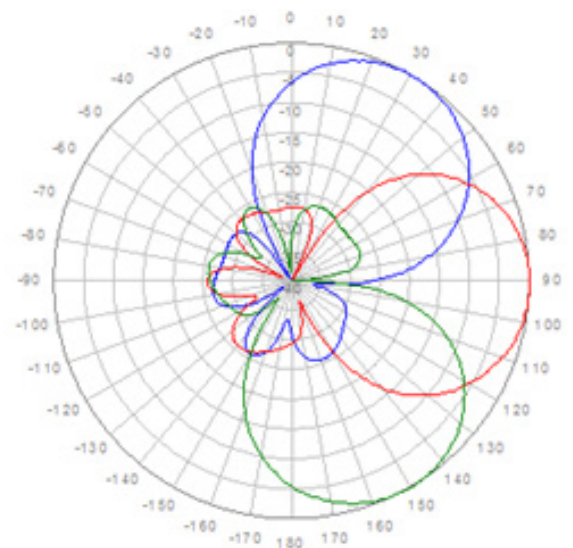
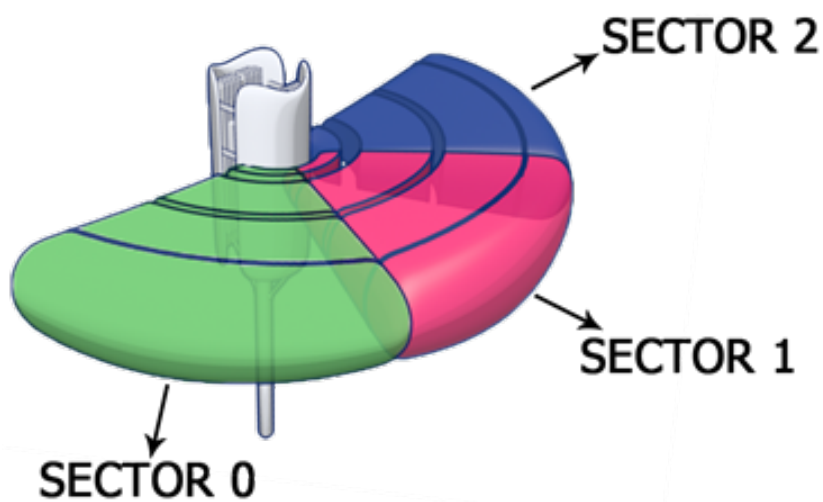
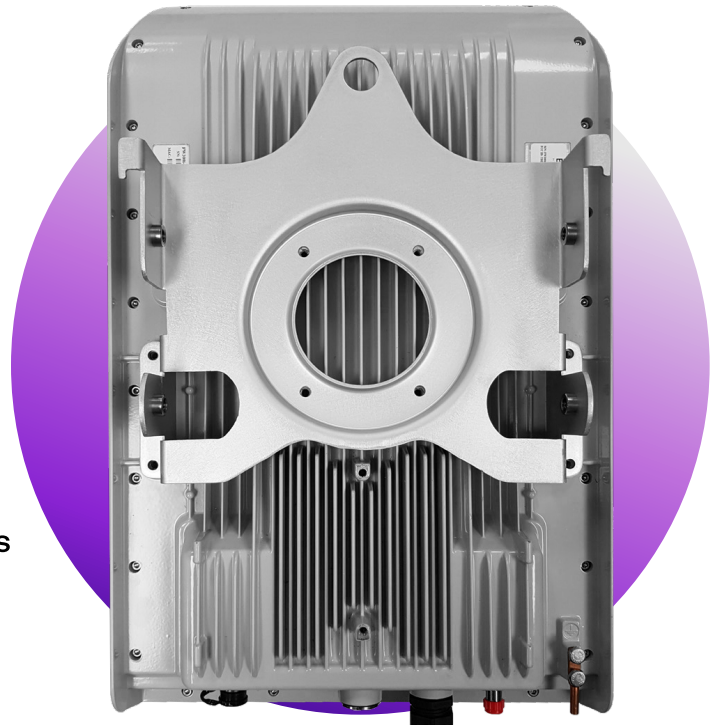
The FW-300i is an integrated wireless solution that is easy to set up, fits anywhere, and provides incredible network capacity. It is a tri-sector and tri-carrier Long-Term Evolution (LTE) Evolved Node B (eNB) with the capability to operate in the following bands: 42, 43 and 48 (Citizens Broadband Radio Service or CBRS).

From the side of a building or water tower, the FW-300i can be deployed effortlessly, giving 3x the capacity at 1/3 the price.

Whether you want to expand your network to remote communities or to busy urban intersections, this OnGo Certified product helps you bring LTE connectivity to anyone, anywhere.

**Here are some key features:**

- 'All-In-One' Fully Integrated Solution
- CBRS Category B Certified
- Supports all LTE TDD Configurations
- Supports 10 MHz and 20 MHz
- Supports Downlink Carrier Aggregation (up to 3CC)
- 180° Azimuth Coverage
- Features Standard 2x2 MIMO Configurations
- Supports IPv6
- Supports Mobility



# AirNode FW-300i

## Specifications



MODELS		
FW3-B48-00-HP-NA / FW3-B42-43-HP-EU		
	FW3-B48-00-HP-NA	FW3-B42-43-HP-EU
<b>RADIO SPECIFICATION</b>		
<b>Frequency Band</b>	3.55-3.70 GHz (LTE Band 48 - CBRS)	3.40-3.80 GHz (LTE Band 42/43)
<b>Transmit Power (Max.)</b>	33 dBm/Port (+3 dBm for Aggregate Power)	29 dBm/Port (+3 dBm for Aggregate Power)
<b>EIRP (Max.)</b>	53 dBm EIRP/Sector	
<b>Channel Bandwidth</b>	10, 20 MHz	
<b>MIMO</b>	2TX x 2RX per Sector	
<b>LTE Compliance</b>	3GPP Release 10 (SW Upgrade to Release 13)	
<b>PERFORMANCE &amp; ATTRIBUTES</b>		
<b>Number of UEs Supported</b>	Up to 288 UEs per Base Unit	
<b>Carrier Aggregation</b>	Supports Contiguous and Non-Contiguous 2CC, 3CC Covers Full CBRS Band (150 MHz)	
<b>Throughput DL TDD Config 2-7</b>	Up to 110 Mbps per Carrier Up to 330 Mbps per Base Unit - 3 x Carriers	
<b>Throughput UL TDD Config 2-7</b>	11 Mbps per Carrier 33 Mbps per Base Unit - 3 x Carriers	
<b>Operating Mode</b>	TD-LTE	
<b>Power Consumption (Max.)</b>	180 W	
<b>Power</b>	48 VDC	
<b>Connectivity</b>	Default: 1 x Copper 1000BaseT; Optional: 1 x SFP	
<b>Synchronization</b>	Integral GPS antenna (GPS, GLONASS, BeiDou), Optional: External GPS	
<b>Citizens Broadband Radio Service (CBRS)</b>	CBSD Category B Certified	
<b>Embedded Evolved Packet Core (EPC)</b>	Software Option	
<b>OPERATIONS, ADMINISTRATION AND MAINTENANCE (OAM)</b>		
<b>Configuration</b>	3.55-3.70 GHz (LTE Band 48 - CBRS)	
<b>EMS Integration</b>	3.55-3.70 GHz (LTE Band 48 - CBRS)	
<b>OAM Protocols</b>	3.55-3.70 GHz (LTE Band 48 - CBRS)	
<b>ANTENNA SPECIFICATIONS BANDS 42/43, 48</b>		
<b>Gain</b>	17 dBi	
<b>Azimuth Coverage (-5 dB)</b>	180°	
<b>Azimuth Beamwidth (-3 dB)</b>	45°	

# AirNode FW-300i

## Specifications



	FW3-B48-00-HP-NA	FW3-B42-43-HP-EU
<b>Azimuth Beamwidth (-5 dB)</b>	60°	
<b>Elevation Beamwidth (-3 dB)</b>	10°	
<b>Electrical Downtilt</b>	0°	
<b>Azimuth Sidelobe</b>	< -25 dB (Typ.)	
<b>Front-to-Back Ratio @180 Degrees</b>	>30 dB (Typ.)	
<b>Co-Polar Port-to-Port Isolation</b>	15 dB (Typ.)	
<b>Cross-Polarization Port-to-Port Isolation</b>	>20 dB (Typ.)	
<b>Max. Voltage Standing Wave Ratio (VSWR)</b>	1.5:1	
<b>Polarization</b>	Dual Pol 45°	
<b>Lightning Protection</b>	DC Ground	
<b>MECHANICAL</b>		
<b>Dimensions (L x W x D)</b>	22.4" x 13.78" x 8.9" (570 x 350 x 227 mm)	
<b>Survival Wind Speed</b>	Up to 124 mph (200 km/hour)	
<b>Weight</b>	28.7 lbs. (13.0 kg)	
<b>Operational Temperature</b>	-40 °F to 140 °F (-40 °C to 60 °C)	
<b>Mechanical Uptilt/Downtilt</b>	0° - 10°	
<b>Ingress Protection</b>	IP56	



WORLD MOBILE

AirNode FW-300i

# Connectivity Redefined.

